

Discovery + Selection

Part 2.1

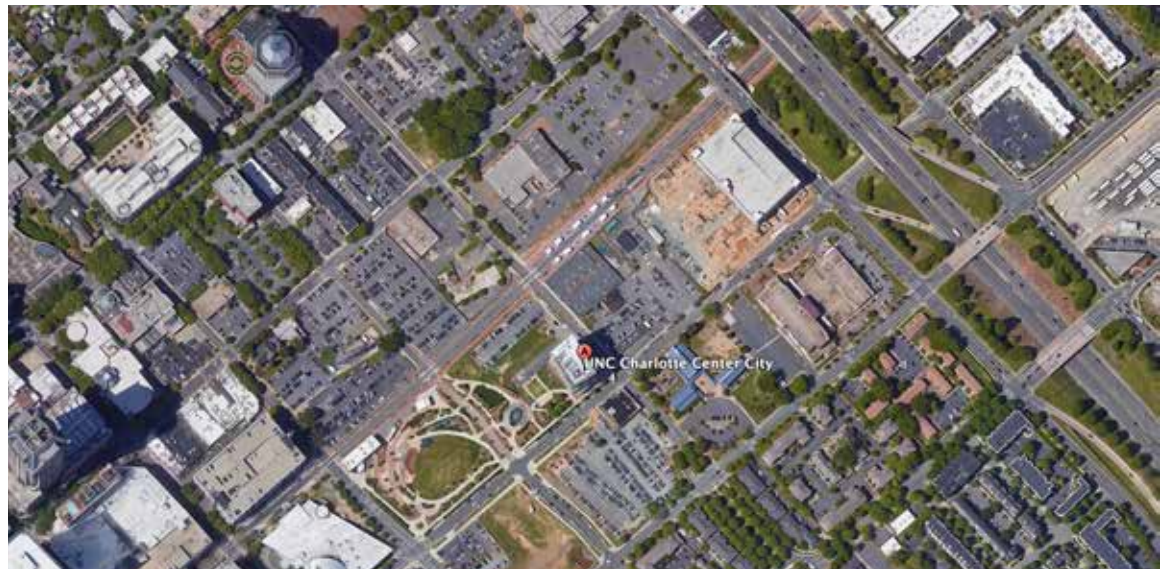
Site Analysis + Selection

Premise

The study of site is essentially a study of a specific place at a specific point in time. This is important as we cannot predict the future but we can study the site based on its current state as well as its documented, and assumed, past. Studies of this sort are inevitably comprised of information both seen and unseen but the richness of a site truly comes into focus when the depth of the study is capable of being viewed through a clear and concise interpretive lens. As such this exercise seeks to articulate the lens through which to view the site and utilize it as a means to investigate, analyze and interpret this place(s).

For the remainder of the semester you will focus on one of two sites. This assignment prompts to you study and select which site you, and your partner, will focus your efforts for the remainder of the semester.

Site 1: Urban Shoulder



Site 2: Rural Connected



Each of these sites - Urban Shoulder + Rural Connected have many pluses and minuses that must be rigorously studied, evaluated and vetted prior to your selection - lean on the research you have executed in Project 1 as part of your selection process.

Objective + Method

Through rigorous study you are to select a site that best fits your desires for your project and program as well as provides opportunity to satisfy the criteria outlined in the COTE Framework for Design. A site analysis of both sites is anticipated prior to the completion of the selection process as the full program is not yet established. The program development will be happening concurrently as part of a separate exercise.

Requirements + Dates

Site Analysis for both Sites - Completed Sept 30, 2020

Final Site Selected - October 2, 2020

Criteria to consider: Raw Data, Phenomenological Information, Connectivity, Infrastructure etc.

Product to consider: Diagrams, Models, Drawings, Sketches, Transportation / Site Data etc.

Final Selected Site Analysis Complete - October 5, 2020

Criteria to consider: fit to program, opportunity + limitations (unlimited opportunity can be creatively stifling, a good site provides a good balance between restriction and opportunity - as you see it)

Product to consider: a robust set of site diagrams - plan, section etc @ micro, meso and macro scales

